

Gawler

Wednesday 01 June 2022

For complete fields, form, replays, tips, previews & more visit www.thedogs.com.au

The Hound Tips Daily Digest

BEST BET

R6 13:32

2 Silver Stone
T: Raymond Murray

The Hounds Says: Comes back in class and distance. Performed well here in the past. Hard to hold out.

NEXT BEST

R5 13:08

5 Air Assault
T: Raymond Murray

The Hounds Says: Back in distance and class and started his career out here with three wins. Should go close.

QUADDIE

Race 5 - 1, 2, 5

Race 6 - 2, 7

Race 7 - 1, 7

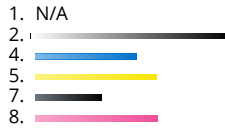
Race 8 - 1, 2, 7

\$20 for 55.55%

R1 NIXON'S FUNCTION CENTRE STAKE PR2 Division1

6th Grade 643m 11:44

MIDNIGHT TRACKER (2) Thought he had his chance on Sunday and went quicker when winning May 22. Can bounce back. HARRY (1) Putting it all together now with a couple of impressive wins. Should lead these. Last 50m the concern. CRIMINAL (8) Slow start didn't help his cause here from a wide draw May 25. Smart winner prior when settling close.



Tips ~~2~~ 1 8 5

R2 GREYHOUNDS AS PETS MAIDEN STAKE PR2 Division1

Maiden 400m 12:05

QUOKKA TWO (4) Worked home well on debut to just miss May 25. Better for that outing. Should go close. BLACK CHARM (1) Copped trouble at her past three starts and has the speed to settle close. Deserves a change of luck. WILCOTT (5) Had a few chances now but he has been consistent in recent starts. Expect a bold showing.

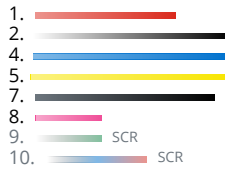


Tips 4 1 5 8

R3 GAWLER DRY CLEANERS STAKE PR2 Division1

6th Grade 400m 12:22

SELMO (8) Strong win from the middle May 22 and has winning form from the outside. Hard to hold out. SOPHIA PALMS (5) Consistent form of late without being able to win. Races on speed and doesn't mind this track. DESTINI SPITFIRE (2) Showed speed but wasn't able to hold her position May 25. Gets room outside. In the mix.

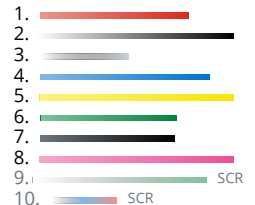


Tips 8 5 ~~2~~ 1

R4 THE BUNYIP (1-4 WINS) Grade 6 Series F PR2 Division1

6th Grade 400m 12:47

BLUE PRIDE (8) Looked the goods winning his last couple in quick time when leading from wide draws. Can repeat. LONG GULLY EDGE (3) Strong win when getting back to the inside last week and stretched away late. Fitter now. Hard to beat. PLANT ROAD (2) Last start winner when leading throughout as a short favourite May 25. Should race on speed again.

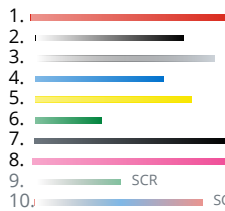


Tips 8 3 ~~2~~ 1

R5 GIDDY-UP STAKE PR2 Division1 5th Grade 400m

13:08

AIR ASSAULT (5) Back in distance and class and started his career out here with three wins. Should go close. BLACK JACK TEA (1) Last start winner from this draw when leading. Should settle close to the front again. Chance. HIRING (2) Down the track at Angle Park May 28 but has performed well here previously. Include.

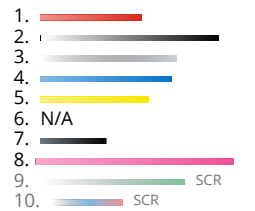


Tips 5 1 ~~2~~ 4

R6 XP3020 STAKE PR2 Division2 5th Grade 400m

13:32

SILVER STONE (2) Comes back in class and distance. Performed well here in the past. Hard to hold out. SAFE DROP (7) Ran quick time when winning at Murray Bridge from a wide draw May 20. Has placed here. SUTTON ABBIE (1) Better than last couple of runs would suggest and has a decent record from inside boxes. Include.



Tips ~~2~~ 7 1 3

R7 ACCELL THERAPY MIXED STAKE PR2 Division1 3rd/4th Grade 400m 13:57

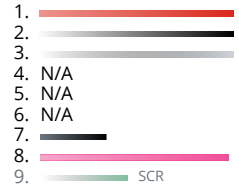
SOUTH SONG (1) Solid form of late on the straight at Murray Bridge and has performed well here in the past. Hard to beat. SVITOLINA (7) Had excuses May 22 and previous form here was solid. Shows speed and likes the outside. Include. DIDELIS (2) Checked and should have finished closer on the fresh side May 25. Has the speed to race close. Chance.



Tips **1 7 2 5**

R8 NIXON'S FUNCTION CENTRE STAKE PR2 Division1 6th Grade 531m 14:18

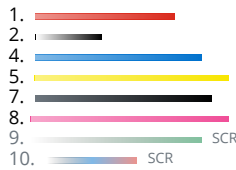
SPRING PHOEBE (7) Worked home late to place on the fresh side May 25 and will take improvement from that. Hard to hold out. CYCLONE JANE (2) Down the track last time but prior form was solid when racing close to the pace. In the mix. SPRINGVALE ROXY (1) Unplaced lone start at this distance and recent 300-400m form has been solid. Should lead.



Tips **7 2 1 8**

R9 GREYHOUNDS AS PETS STAKE PR2 Division2 6th Grade 400m 14:42

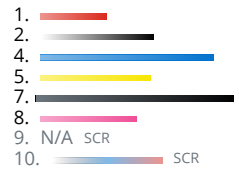
IMPULSIVE (1) Nice win on debut and had little luck second-up. Gets the inside now. Should go close. MUDDLE PUDDLE (4) In the money all five starts here and has the pace to race close to the front. Include. SPRING HIGH LOW (7) Both starts have come from this draw and has shown speed on each occasion. Has upside.



Tips **1 4 7 8**

R10 GAWLER DRY CLEANERS STAKE PR2 Division3 6th Grade 400m 15:07

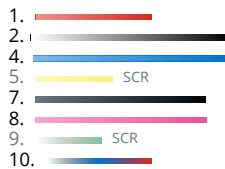
AIR GRACE (4) Back in distance and class and had a couple of strong wins here back in April. Hard to hold out. COMPTON CASEY (7) Consistent record from all draws and has the speed to challenge for the front. Include. TRIVET (8) Impressive winning his last two and overcame trouble when winning in town May 23. Place claims.



Tips **4 7 8 2**

R11 THE BUNYIP (N/P) STAKE PR2 Division1 6th Grade 400m 15:31

ASTON JUDGE (1) Just outside the money of late but lone start from this draw resulted in a win. This suits. ALL ABOUT (2) Placed from the outside last time and didn't have much luck here prior. Both wins have come here. MISS BUNTY (4) Much improved run for 2nd May 28 and is a winner here. Races best close to the lead.



Tips **1 2 4 10**

R12 GIDDY-UP (N/P) STAKE PR2 Division1 P5 400m 15:47

YUNA BALE (2) Moderate form of late but should get a better passage drawing close to the inside. Take beating. FAUX ALLIE (1) Hasn't done much for a while but can improve in this line-up from the rails. Has the speed to challenge. NOVA CASCADE (7) Has a couple of wins from this draw and can show enough early speed to settle close. Value.



Tips **2 1 7 4**